



ION SENSE® PID 10.6eV 3



Key Features

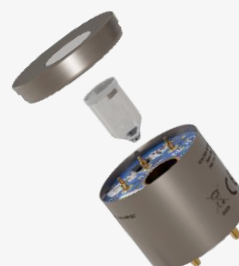
- ❖ 15,000 hour lamp and filter life
- ❖ Superior lamp stability
- ❖ Exceptional humidity resistance
- ❖ Anti-contamination design
- ❖ Designed for longevity and stability
- ❖ World's most sensitive PID
- ❖ 5 x Improved stabilisation time
- ❖ Response time reduced by 50%
- ❖ Robust EMI protection
- ❖ Intelligent diagnostics ensuring operator safety (patent pending)
- ❖ Serviceable filter, electrode stack and lamp
- ❖ Enhanced pneumatic integration

Key Benefits

- ❖ Accurate PPB measurement
- ❖ High accuracy in challenging environments
- ❖ Easy integration
- ❖ Easy to service
- ❖ Reduced calibration and servicing
- ❖ Low Cost of ownership

Performance

Minimum Detection Limit	0.5 ppb
Range	>3 ppm
T90 Response Time (S)	<6s
Sensitivity	>600mV/ppm



Power & Signal

Supply Voltage	3.2V - 5.0V
Current	30 mA continuous, <50 mA transient 10 ms
Power Consumption	3.2V = <100 mW
Output Signal	0 - rail voltage - .15

Relative Humidity Range

Temperature Range	-40 to +60 °C
Relative Humidity Range	0 - 99% RH (non-condensing)
Pressure Range	800-1200 mBar

Lifetime & Warranty

Sensor Life	>5 years
Lamp & Filter Life	15,000 hours
Warranty	PID Body = 24 months / Lamp = 12 months

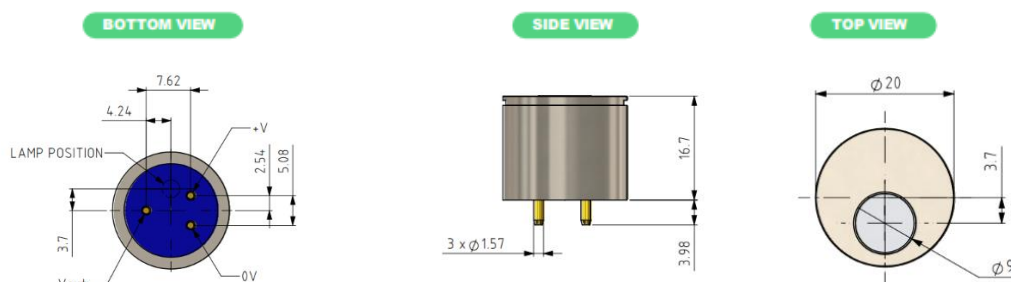
Order Code

ISPID1N36KAX

Supply Voltage

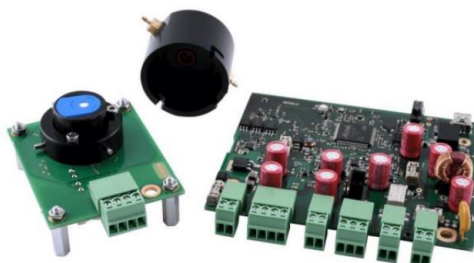
3.0V to 5V

Drawings



Sensor Development Kit (SDK)

Sensor Development Kit is used as an efficient way to test and integrate the ION Sense photoionization detection sensors into any application. SDK includes everything needed to run Ion Sense sensors, including an integration board, sensor board, gas delivery hood and a PC application.



Next Generation Integration Boards

ION sense integration boards are the core of the ION SENSE® integration suite, designed to seamlessly bridge your gas sensor with your system. These microprocessor powered compact 32mm PCBs convert the analog signal from PIDs to industry standard digital outputs, significantly reducing your integration time and costs.

